



# 505862 High Definition 4k Microscope Camera and Software

With 8-Megapixel Resolution Image Capture



[www.wpiinc.com](http://www.wpiinc.com)

# 4K 505862 Camera Features

## Interface

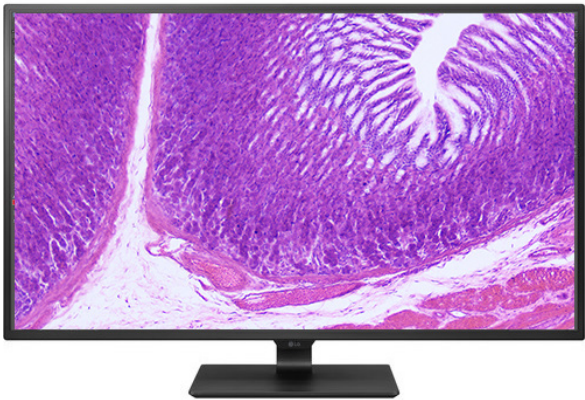
With HDMI and USB this 4K high definition camera provides options for users.

- HDMI Output
- USB Output (USB Flash Drive Capture Option)
- SD Card Capture Option



## 4K 505862 Monitor

Connect the 505862 to a 4K capable monitor to experience the true 4K resolution.



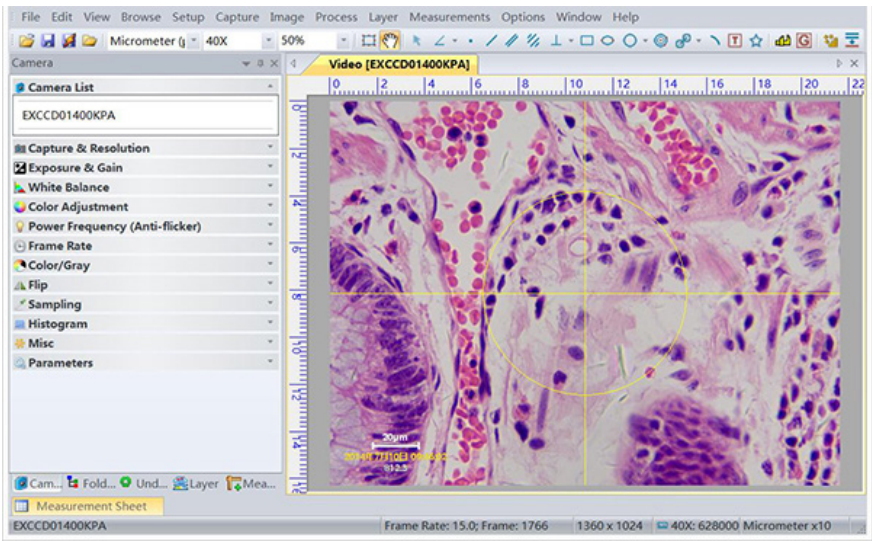
## Accessories

4K High Definition camera includes:

- HDMI Cable
- USB Cable
- Power Cord
- SD Card
- Software
- USB Mouse for On-Screen HDMI Control



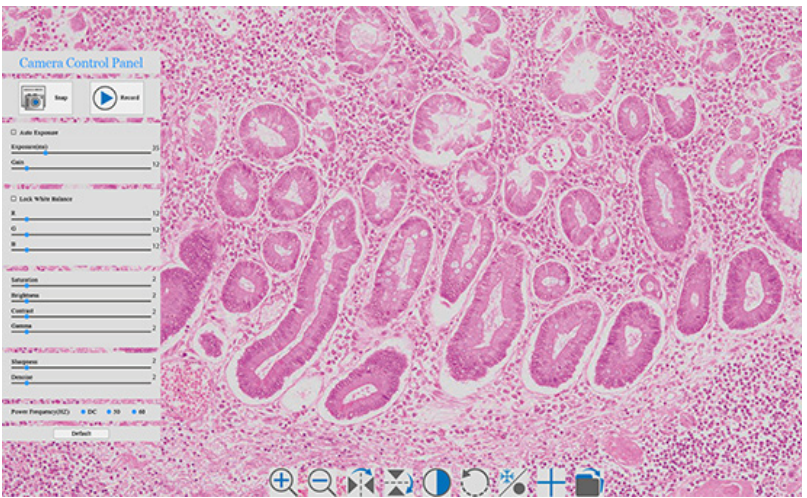
## USB Computer Software Features



When using the camera with USB connection to a desktop or laptop computer, software features include:

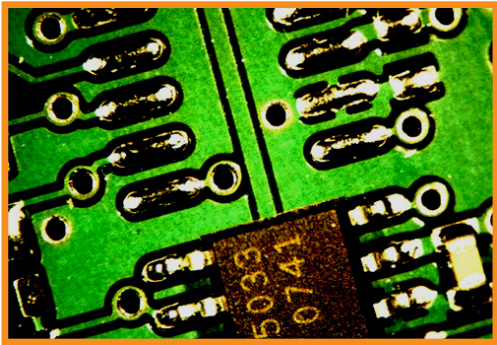
- Image Capture (8 Megapixels), Motion Video Capture (PC only, will not work with MAC)
- Calibration & Image Measurement: Angle, Line, Circle, Ellipse, Rectangle, Arc, Polygon, etc.
- Image Stitching
- Exposure, Gain, White Balance, Color Adjustment, Frame Rate

## HDMI On-Screen Menu and Features

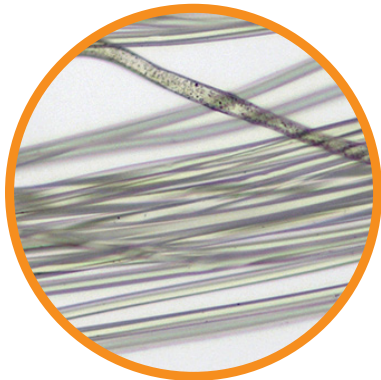


When using the camera with a monitor, on-screen adjustments can be made with the mouse:

- Measurements
- Exposure, Gain, White Balance, Saturation, Brightness
- Sharpness, Denoise, Contrast, Gamma
- Image capture (8 Megapixels) to SD Card or USB flash drive
- Video capture to SD Card
- Image rotation
- Zoom
- Cross-Line Imposed Upon Image



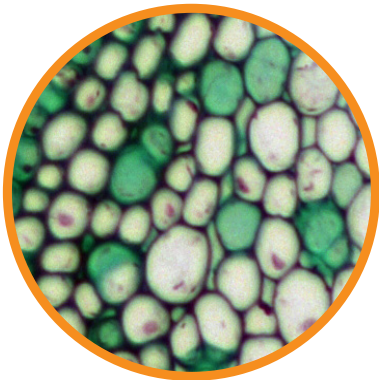
Printed Circuit



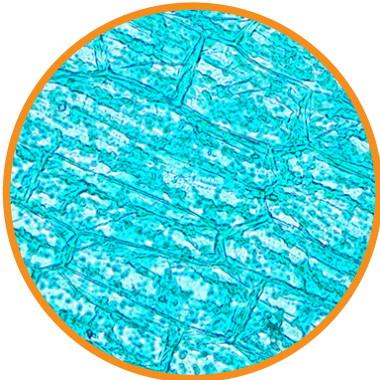
Silk Fibers



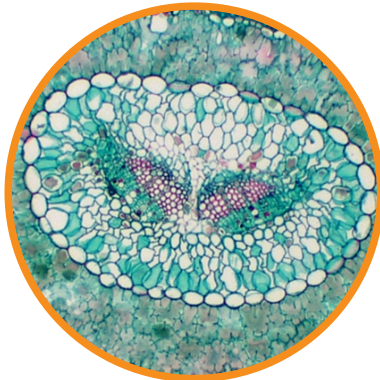
June Bug



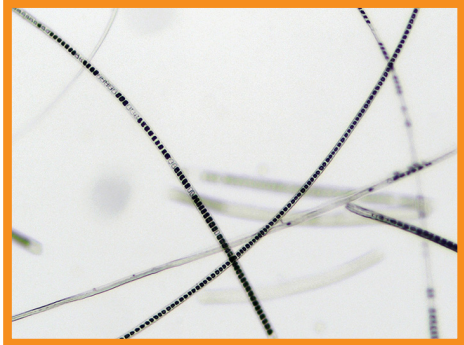
Privet Leaf c.s.



Hydrilla Verticillata



Pine Leaf c.s.



Rabbit Hair

# SPECIFICATIONS

Feature	Specification
Image Sensor	1/1.8" Exmor Sony STARVIS IMX678(C)
Pixel Size	2.0 x 2.0µm
Resolution	3840 x 2160
Frame Rates	HDMI: 30fps @ 3840 x 2160 4K resolution
Binning	1x1
Exposure	0.1ms~1000s
Output	HDMI
	USB2.0
Sensitivity	505 mv
Power	DC12V/2A, power on/off switch.
HDMI Controls	USB Mouse for on-screen control. 8 Megapixel Image Capture to SD Card or USB Flash Drive, Video recording 50- 60fps to SD Card or USB flash drive. Camera control panel: Exposure, Gain, White Balance, Color, Sharpness Toolbar: Zoom, Mirror, Comparison, Freeze, Crossline, On-Monitor Measuring
USB Controls	White Balance, Auto White Balance, ROI White Balance Capture still images or motion video with software USB works with full use of software on PC or Laptop (will not work with MAC)
Software Features	Image capture, still or motion video Adjustment of white balance, color, frame rate, exposure, gain, flip, sampling, ROI, histogram, darkfield correction. Annotation Measurement and Calibration: angles, lines, diameter, polygon, etc.
Operating System for Software (USB)	Windows 7, 8, 10, 11 (32 & 64 bit), Linux, MAC OS X.
PC Requirements (USB)	CPU equal or greater than Intel Core2 2.8GHz Memory: 4GB or more USB3.0 Port, Display of 19" or larger, 4K resolution
Operating Temp	-10~50°C
Storage Temp	-20~60°C
Operating Humidity	30-80%RH
Storage Humidity	10-60%RH
Size	88mm (3.46") W x 65mm (2.46") D x 78mm (3.07") H, 1lb.
Connection	C-Mount Threads

The HD Camera has 1" threads (c-mount) and is made from tough CNC aluminum alloy, ensuring a heavy duty solution. The camera uses a high quality IR-CUT filter to protect the camera sensor.

