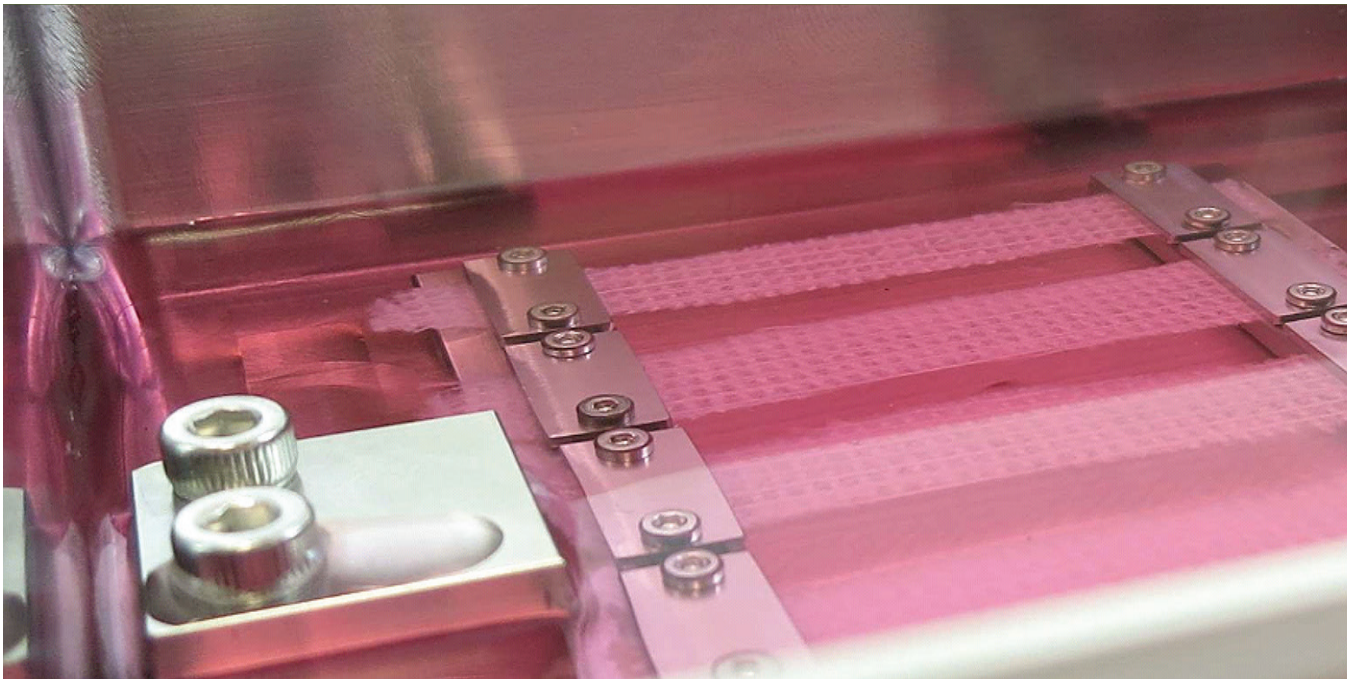




WORLD  
PRECISION  
INSTRUMENTS  
*Instrumenting scientific ideas*

## MechanoCulture T6

*Uniaxially stretch up to 6 clamp-mounted specimens*



The **MechanoCulture** product group is used for culturing cells in a mechanically active environment. These culture systems contain configurations to support single or multiple parallel tests using a variety of flexible membranes and scaffolds. The on-board controllers enable PC-independent execution of user-defined motion protocols. All **MechanoCulture** systems can be operated in an incubator environment and all cell-contacting components are made from autoclavable materials.

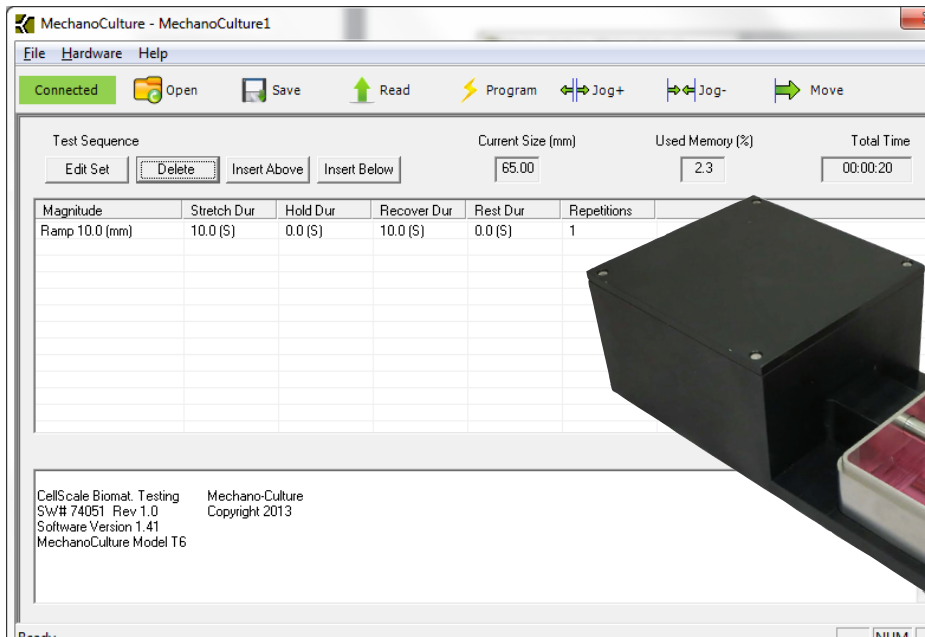
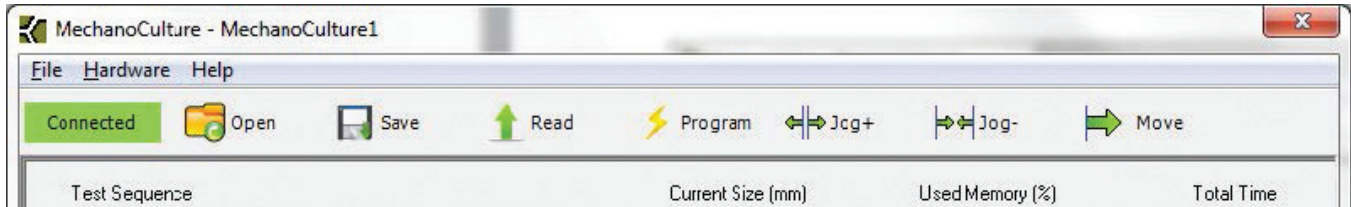
The **MechanoCulture T6** can uniaxially stretch up to 6 clamp-mounted specimens from 5-80mm in length. For stimulation

in tendon, ligament, and bone tissue engineering work, it can deliver up to 250N of thrust. For cardiovascular research, the system can stimulate at up to 5Hz.



# MechanoCulture T6

Uniaxially stretch up to 6 clamp-mounted specimens



The **MechanoCulture T6** can be programmed to run constant velocity or sinusoidal stretch patterns. Magnitudes, frequencies, rest periods, and cycle counts can all be specified in the software application and programmed to the device.

## PULL RODS

Select one when ordering

- Pull Rod for 0-25mm grip separation range
- Pull Rod for 10-35mm grip separation range
- Pull Rod for 20-45mm grip separation range
- Pull Rod for 30-55mm grip separation range
- Pull Rod for 40-65mm grip separation range
- Pull Rod for 50-75mm grip separation range
- Pull Rod for 55-80mm grip separation range

All components in contact with the culture can be autoclaved and the device can be run inside an incubator environment.

Stainless steel grips secure the specimens at each end. The spacing and geometry of these grips can be customized to suit a variety of specimen sizes and materials.



## WORLD PRECISION INSTRUMENTS

**USA:** International Trade Center, 175 Sarasota Center Boulevard, Sarasota FL 34240-9258 USA **Tel:** 941-371-1003 • **Fax:** 941-377-5428 • **E-mail:** wpi@wpiinc.com • **Internet:** www.wpiinc.com

**UK:** 1 Hunting Gate, Hitchin, Hertfordshire SG4 0TJ England • **Tel:** 44 (0)1462 424700 • **E-mail:** wpiuk@wpi-europe.com

**Germany:** Zossener Str. 55, 10961 Berlin, Germany • **Tel:** 030-6188845 • **Fax:** 030-6188670 • **E-mail:** wpide@wpi-europe.com

**China & Hong Kong:** Rm 29a, No8 Donfang Rd., Pudong District, Shanghai 200120 PRC • **Tel:** +86 688 85517 • **E-mail:** ChinaSales@china.wpiinc.com

**Brazil:** Conselheiro Nabias, 756 sala2611, Santos-Sao Paulo 11045-002 Brazil • **E-mail:** info@brazil.wpiinc.com