



Uniaxial Tissue Tester

CS-UStretch



- Quality testing
- Cost-effective
- Easy to use
- Multiple attachment options
- Available imaging and temperature controlled fluid bath

The UStretch makes it possible to carry out dependable, mechanical testing of soft materials for a reasonable price.

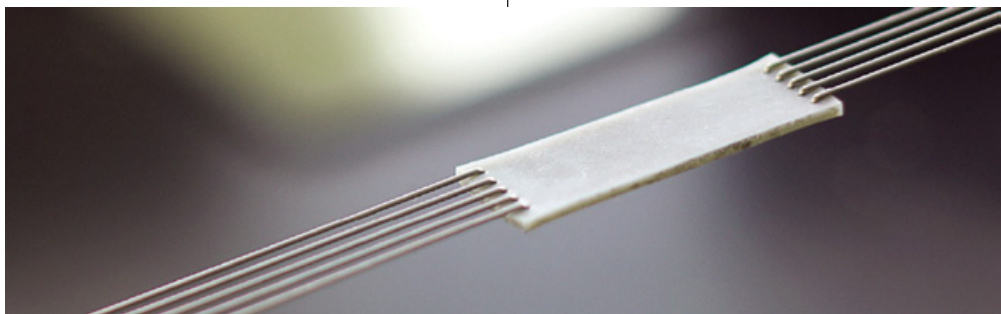
Applications

Typical applications include hydrogels, skin, muscle, blood vessels, heart valves, ligaments, sclera and scaffolds.

Specifications

You can test specimen as small as 3x3mm and as large as 20x100mm.

Deformation rates can be as high as 50mm/s and applied forces can be monitored at 100Hz. Load control is also possible, and simple or complex protocols can be specified. A variety of load cells are available, with force resolutions as low as 1mN and capacities as high as 100N.





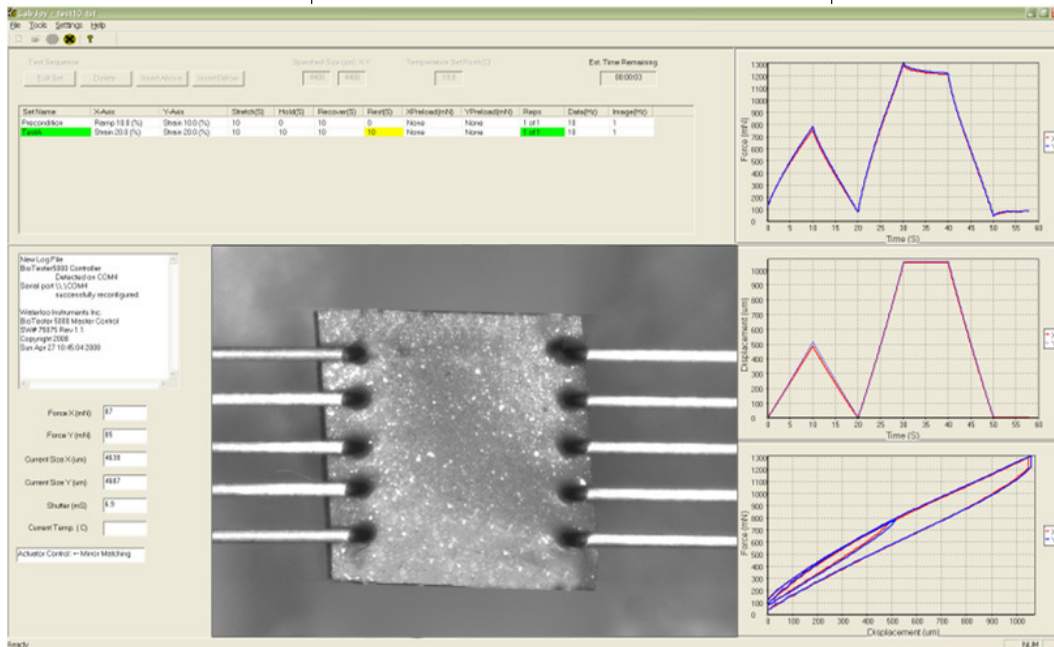
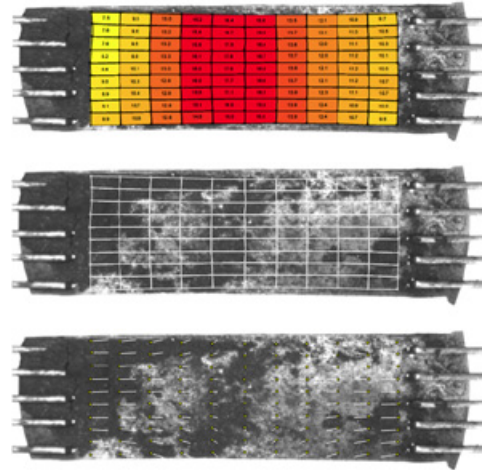
Uniaxial Tissue Tester

CS-UStretch

Software

Optional image tracking and analysis software allows images to be analyzed to identify and quantify strain non-uniformities and regional property variations (like those in the specimen to the right).

Test protocols can be saved and modified. Real-time force and displacement graphing facilitates test validation.



World Precision Instruments, Inc.

USA: International Trade Center, 175 Sarasota Center Boulevard, Sarasota FL 34240-9258 USA
Tel: 941-371-1003 • Fax: 941-377-5428 • E-mail: info@wpiinc.com • Internet: http://www.wpiinc.com

Germany: Zossener Str. 55, 10961 Berlin, Germany • Tel: 030-6188845 • Fax: 030-6188670 • E-mail: wptide@wpi-europe.com

China & Hong Kong: WPI Shanghai Trading Co., Ltd. • Tel: +86 688 85517 • E-mail: ChinaSales@china.wpiinc.com

UK: Astonbury Farm Business Centre • Aston, Stevenage, Hertfordshire SG2 7EG England • Tel: 01438-880025 • E-mail: wpiuk@wpi-europe.com