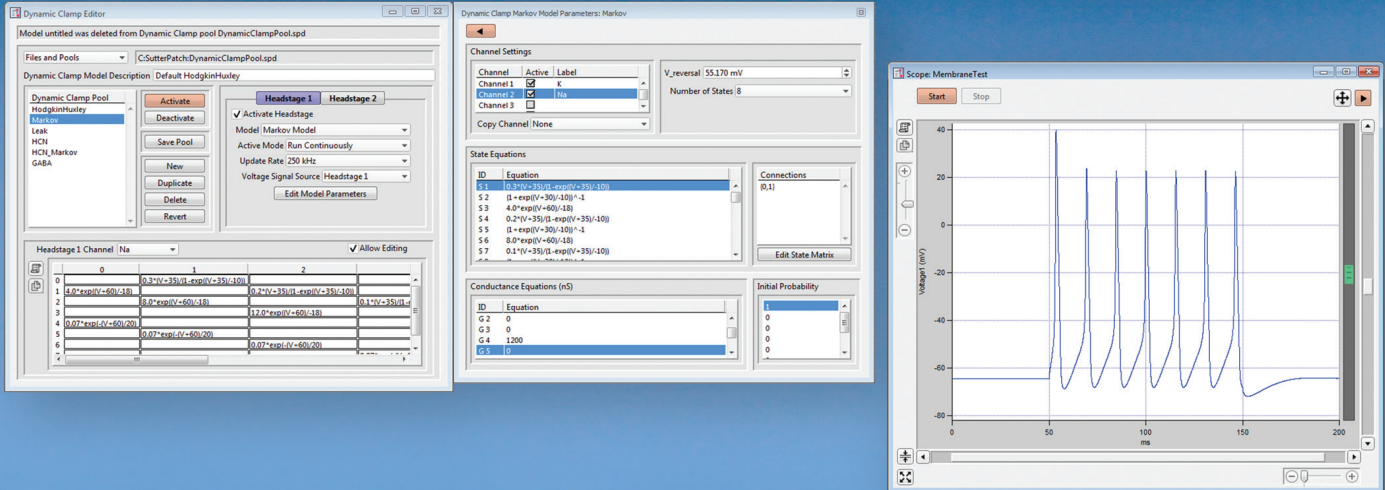


The first all-in-one solution for performing dynamic clamp experiments!

New Feature



DYNAMIC CLAMP FOR THE dPATCH DIGITAL PATCH CLAMP AMPLIFIER

The dynamic clamp technique was first introduced in 1993 as a method for simulating ionic conductances in neurons during patch clamp recordings. This method typically involves recording the cell's membrane potential, transmitting the data to a computer, calculating the appropriate current to be injected into the neuron, and sending this value back to the amplifier. Communication between the computer and amplifier limits the rate at which the dynamic clamp calculations can be updated. Moreover, the additional hardware and software needed to do dynamic clamp has limited its application. An all-in-one solution is now available as a free upgrade to **SutterPatch**[®] software and the **dPatch**[®] amplifier for researchers interested in performing dynamic clamp experiments.

The patented digital architecture of the dPatch amplifier provides an ideal platform for dynamic

clamp. The **dPatch** is powered by a system-on-chip which provides parallel processing across a Field Programmable Gate Array (FPGA) and two high-speed ARM core processors. Several sophisticated dynamic clamp models are implemented within this architecture. In each model, the update of the applied current values occurs without communication between the **dPatch** and a computer. Depending upon the complexity of the model, update rates of up to 500 kHz can be achieved.

Simulation of a population of channels within the neuronal membrane involves modeling the kinetics of the channel's gating mechanisms. These channel kinetics can either be modeled using multiple independent gates as in the Hodgkin-Huxley model, or a multi-state Markov model. For Hodgkin-Huxley style models, the **dPatch** provides for up to 16 individual gates per simulated channel, with up to

eight simulated channels running simultaneously per headstage. For Markov models, up to four 14-state models can be run simultaneously or eight models with fewer states can be run. For instance, eight 10-state models can run simultaneously.

The values derived from the gating equations are then used to calculate the current applied to the neuron. The calculation of current can either be defined in terms of conductance or permeability. For conductance models, the value defined from the gating calculations is combined with the reversal potential of the ions passing through the simulated channels, as well as the conductance of the simulated channels. Furthermore, channel conductance values can be voltage dependent. For permeability models, the value defined from the

(CONTINUED ON BACK)

Distributed by:



WORLD PRECISION INSTRUMENTS EUROPE

- UK: 1 Hunting Gate, Hitchin, Hertfordshire. SG4 0TJ. UK. wpiuk@wpi-europe.com T +44 (0) 1462 424700 • F +44 (0) 1462 424701
- Germany: Pfingstweide 16, 61169 Friedberg, Germany wpi-de@wpi-europe.com T +49 (0)6031 67708-0 • F +49(0)6031 6770880
- France: wpi-fr@wpi-europe.com T +33 (0)970 44 90 00

gating calculations is combined with the intracellular and extracellular concentrations of the ions passing through the simulated channels. These models simulate the Goldman-Hodgkin-Katz equations.

***SutterPatch** software provides an intuitive and powerful dynamic clamp interface.*

SutterPatch software is a full featured data acquisition, management and analysis application designed to operate on Windows or Mac OS computers. **SutterPatch** comes bundled with the **dPatch** amplifier. The dynamic clamp user interface provides a powerful mechanism for loading dynamic clamp models. No expertise with scripting is required. Gate equations or Markov model transitions are simply entered as text and are interpreted by **SutterPatch**. Individual dynamic clamp models are saved in a pool and can be easily transferred between users. In addition, a number of sample models are provided to get users started, ranging from a simple leak conductance to a 12-state sodium channel.

Summary

- This free upgrade to **SutterPatch** software and the **dPatch** amplifier provides the first all-in-one solution for the researcher interested in performing dynamic clamp experiments.
- Fast dynamic clamp update rates result from the patented digital architecture of the **dPatch** amplifier.
- Supported models include:
 - Hodgkin-Huxley style conductance models
 - Goldman-Hodgkin-Katz style permeability models
 - Markov models
- **SutterPatch** software control of dynamic clamp requires no scripting.

Distributed by:



WORLD PRECISION INSTRUMENTS EUROPE

- UK: 1 Hunting Gate, Hitchin, Hertfordshire. SG4 0TJ. UK.
wpiuk@wpi-europe.com T +44 (0) 1462 424700 • F +44 (0) 1462 424701
- Germany: Pfingstweide 16, 61169 Friedberg, Germany
wptide@wpi-europe.com T +49 (0)6031 67708-0 • F +49(0)6031 6770880
- France: wpi-fr@wpi-europe.com T +33 (0)970 44 90 00

www.wpi-europe.com