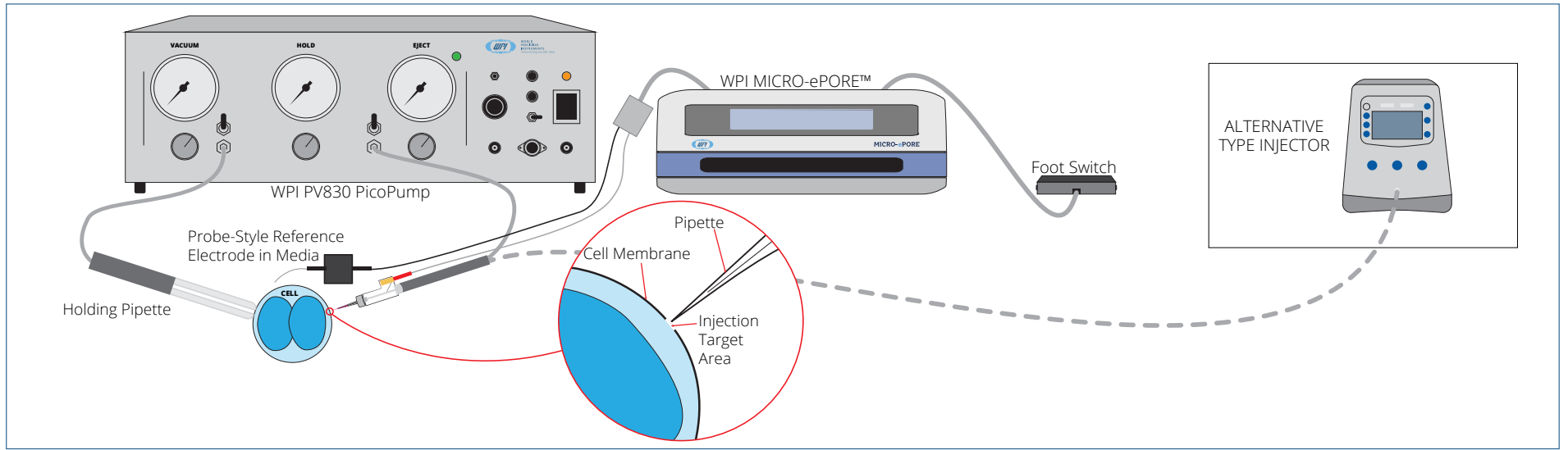


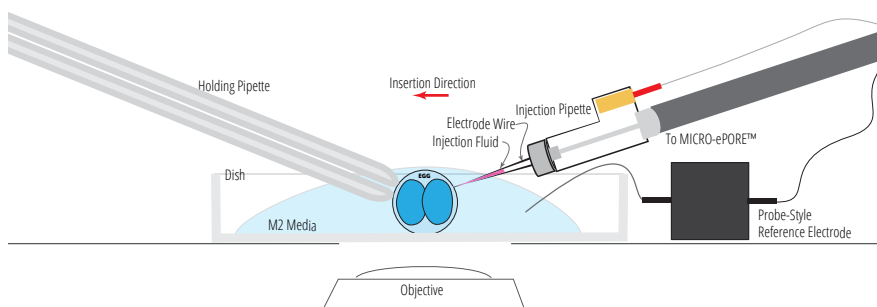


Setup



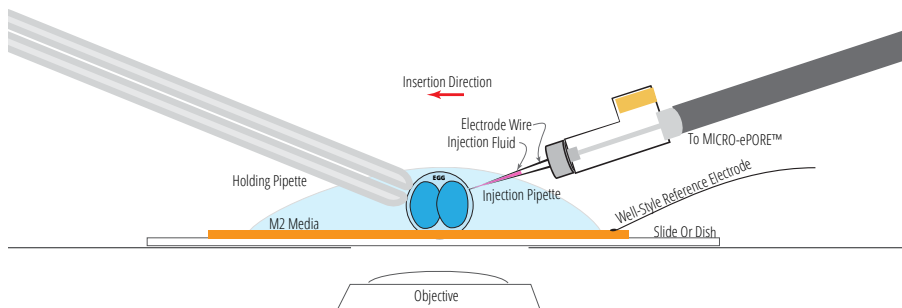
The setup could use the probe-style reference electrode or the well-style electrode, as pictured below.

PROBE-STYLE REFERENCE ELECTRODE OPTION



The reference electrode block is positioned near the injection site and the electrode is placed in the electrically conductive media.

WELL-STYLE REFERENCE ELECTRODE OPTION



The reference electrode ring is secured to a microscope slide with a vacuum gel, and the media is placed inside the well-style electrode. Both the probe-style electrode and the well-style electrode are included.

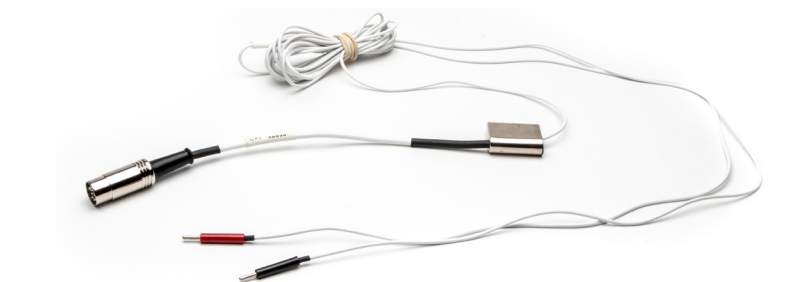
Pipette Holder Connection

NOTE: The Pipette holder is designed to interface directly to popular injection systems like the WPI PV820/WPI PV830, Eppendorf Femtojet® or the Narishige injectors.

1. The pipette holder has a silver wire that must be inserted into the glass micropipette. The wire must be long enough to make contact with the substance to be injected. This wire is intentionally left longer than most pipettes to allow for different lengths. Trim the wire to the preferred length.



2. The Microelectrode Interface Cable has two 2 mm male pin connectors.



- Insert the red pin into the socket on the microelectrode holder.



- The black pin of the microelectrode interface cable connects to the 2 mm socket of either of the reference electrode options. This is necessary to complete the electrical connection to solution:

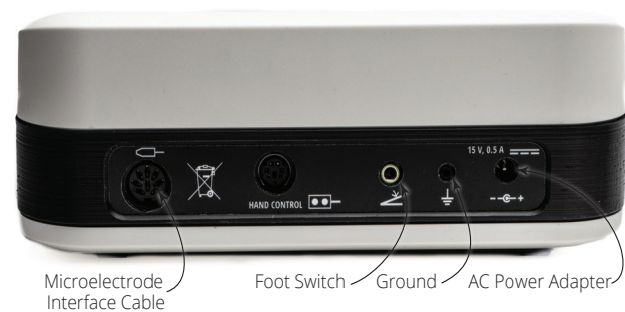
- A. For the well-style reference electrode, insert the black pin of the microelectrode interface cable into the socket of the reference electrode (Left).
- B. For the probe-style reference electrode, insert the black pin of the microelectrode interface cable into the back side of the reference electrode block. Plug the probe-style reference electrode pin into the front of the block (Right).



3. **A. Well-style electrode**—If you use the well-style electrode, the gold ring must be secured to your slide using vacuum grease to create an impermeable temporary seal. Place the liquid medium with your embryos inside the gold ring.
- B. Probe-style electrode**—If you are using the probe-style electrode, place the block near the injection site. Then, bend the bare reference wire as needed to make contact with the liquid medium in order to complete the circuit.

NOTE: The silver wire should be chlorided before using it. The silver wire is supplied without chloriding. Refer to the procedure in the Maintenance section of the Instruction Manual.

Rear Panel Connections



The back panel of the MICRO-ePORE™ has the following connection ports:

Microelectrode Interface Cable—Connect the Microelectrode Interface Cable (probe cable) to this port. Be sure to line up all the pins and gently (but firmly) press the connector into the port.

Foot Switch—Plug the foot switch connector into this jack.

Ground—If needed, this port gives you access to the ground potential. This may be used for connecting with other instruments to ensure a common ground reference. The MICRO-ePORE™ is grounded and the probe interface cable is shielded, so use of this port is optional.

AC Power Adapter—Plug the power supply into this port and connect the other end to an AC wall outlet.

OPERATION

Once the all cables are connected and the unit is plugged into an A/C wall outlet, press the power button on the front of the controller to power up the controller. Use the menu system to set the desired voltage and frequency. The background color of the injection counter indicates if a good connection to the specimen is achieved. (Green is good. Red indicates a faulty connection with the specimen.) This color change happens as the pedal is pressed and remains until the pedal is released.

Press the foot switch to activate the signal applied at the micropipette wire. You will hear a low frequency tone when the continuity on the probe is not adequate. Otherwise a steady tone is emitted.

NOTE: The reference wire is not always connected to ground. This is a multiplexed pin. Before pressing the pedal, this pin is connected to an input used to measure impedance in combination with the output wire (red terminal pin). When the pedal is pressed a measurement is taken, the reference pin is connected to ground and the output wire produces the stimulus signal.

WORLD PRECISION INSTRUMENTS

USA: International Trade Center, 175 Sarasota Center Boulevard, Sarasota FL 34240-9258 USA
Tel: (941) 371-1003 • Fax: (941) 377-5428 • E-mail: wpi@wpiinc.com • Internet: www.wpiinc.com

UK: 1 Hunting Gate, Hitchin, Hertfordshire SG4 0TJ England • Tel: 44 (0)1462 424700 • E-mail: wpiuk@wpi-europe.com

Germany: Saarstraße 23, D-61169 Friedberg (Hessen) • Tel: +49 (0)6031 1602171 • Fax: +49 (0)6031 1602180 • E-mail: wpi@wpi-europe.com

China & Hong Kong: Rm 25e, No8 Donfang Rd., Pudong District, Shanghai 200120 PRC • Tel: +86 688 85517 • E-mail: ChinaSales@china.wpiinc.com

Brazil: Conselheiro Nabias, 756 sala2611, Santos-São Paulo 11045-002 Brazil • E-mail: info@brazil.wpiinc.com