



# SUMILON Companion Plates for use with EVOM™ Auto

How WPI's Auto-Exchange Plate Transforms Barrier Integrity Assays

## ? CHALLENGE OF OTHER PLATES

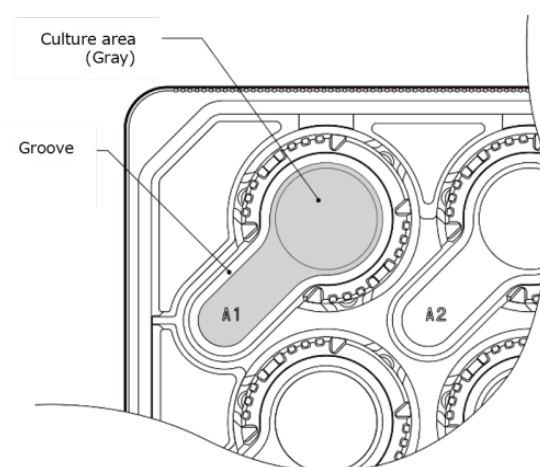
### Limits of Traditional Plates

- Tight geometry means manual pipetting
- One-by-one handling is time consuming
- Manipulating inserts introduces variability
- Manual process means limited throughput

## FEATURES

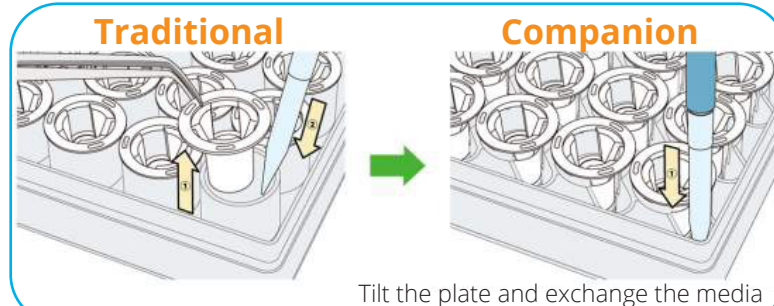
### Designed for Efficiency

- Universal insert compatibility – works with most common manufacturers
- Secure, tilt-friendly insert seating
- Spill-proof well design
- Built-in media exchange port
- Cell-culture treated growth area
- Humidity reservoir



### Companion Plate Advantage

- Compatible with EVOM™ Auto 24M Array for high throughput TEER screening
- Unique design for streamlined fluid exchange
- No need to remove the inserts
- Consistent results
- High-throughput ready



## BENEFITS AT-A-GLANCE

Benefit	Impact
Secure Seating of Inserts	Protects cellular integrity
Suppress Capillary Action	Prevents liquid rise
Easy Sampling	All wells can be addressed at once using a pipette
Fewer Manual Steps	Save time with no need to remove inserts individually
Compatible with Automation	Seamless integration with lab automation & high-throughput workflows
Simple Media Exchange	Enhances assay robustness in drug-permeability & barrier function studies

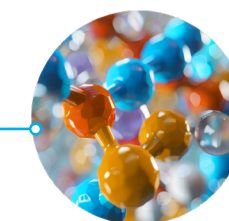
## APPLICATIONS



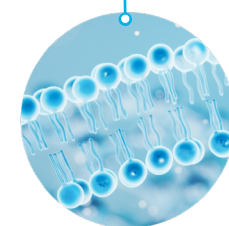
Drug Permeability Screens



Barrier Function Analysis



Immunocytochemistry



Automated TEER Measurement

SCAN ME!



<https://www.wpiinc.com/xchg-plt>