



WORLD
PRECISION
INSTRUMENTS

*Research products for
wherever science takes you*

WHAT'S NEW AT WPI

MICRODIALYSIS

The **BASi** microdialysis system with the unique Ratern cage allows you to collect periodic samples and behavioral data simultaneously. This system for rodents utilizes a unique, movement-responsive action to prevent the tangling of inlet and outlet lines.

This unique system allows the running of contiguous lines to your animal, and maintains the integrity of catheters, infusion lines, liquid lines, cables (electrical wires), optical fibers and other connections between an animal and devices external to the cage. It can be used in any experimental setting in place of a liquid swivel and/or a commutator. It is perfect for applications like:

- Neurotransmitters (Dopamine, NE, Histamine)
- Neuropeptides (Insulin)
- Hormones (CRH, Leptin)
- Drug Concentration
- Antibodies



Benefits

- Microdialysis probes are great for neurotransmitters
- Large amount of historical data and publications
- Rat, mouse and other species designs available
- Surgical technique documents and training available

All specifications subject to change.

WORLD PRECISION INSTRUMENTS

USA: 175 Sarasota Center Boulevard, Sarasota FL 34240-9258 USA

Tel: (941) 371-1003 • Fax: (941) 377-5428 • E-mail: wpi@wpiinc.com • Internet: www.wpiinc.com

UK: 1 Hunting Gate, Hitchin, Hertfordshire SG4 0TJ England • Tel: 44 (0)1462 424700 • E-mail: wpiuk@wpi-europe.com

Germany: Pfingstweide 16, D-61169 Friedberg (Hessen) • Tel: +49 (0)6031 67708-0 • Fax: +49 (0)6031 67708-80 • E-mail: wpide@wpi-europe.com

China & Hong Kong: Rm 27A, No 8 Dongfang Rd., Pudong New District, Shanghai PRC • +86 6888 5517 • 400 688 5517 • ChinaSales@china.wpiinc.com

Brazil: Conselheiro Nabias, 756 sala2611, Santos-São Paulo 11045-002 Brazil • E-mail: info@brazil.wpiinc.com

Visit us at
www.wpiinc.com
today.





WORLD
PRECISION
INSTRUMENTS

*Research products for
wherever science takes you*

WHAT'S NEW AT WPI

NEUROSCIENCE



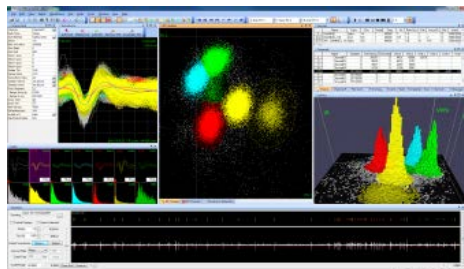
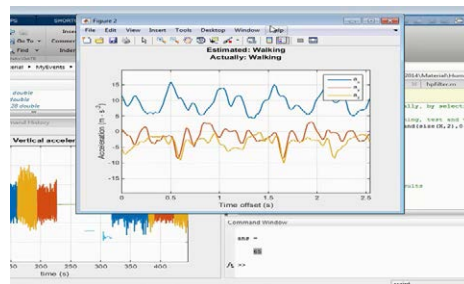
System Neuroscience
Drug Studies
Surgery Monitoring
Advanced Neurophysiology

NeuroPhys I and **NeuroPhys II** are affordable, high-performance data acquisition (DAQ) systems for in vivo, extracellular neurophysiology experiments using up to 32 and 64 electrodes, respectively. The user-friendly software and plug-and-play hardware (only minutes to setup) provide researchers with a sophisticated yet easy-to-use neural DAQ system. Our noise-immune miniature digital headstages are ideally suited to interface with small and large animals, including birds, mice, rats, cats, and non-human primates. Configurations are available for both anesthetized and freely-behaving animal models. A battery-powered option eliminates inadvertent ground loops, which ensures high signal-to-noise recordings even in the most demanding lab environments (high levels of EMF noise).



Benefits

- Compact, lightweight, and portable
- Interface to any electrode type (silicon/laminar probes, MEAs, MWAs)
- Noise immunity
- World's smallest and lightest headstages
- Software-selectable filter type and bandwidth
- Real-time spike sorting
- Up to three signal streams per channel (raw, field potentials, spikes)
- Import data on Spike 2, NeuroExplorer, Offline Sorter and MATLAB/Python
- Auxiliary I/O for synchronizing third-party systems (video, behavioral, stimulation)
- Electrode monitoring during implantation surgeries (**NeuroPhys I**)
- Fast stimulus-artifact recovery (**NeuroPhys II**)



All specifications subject to change.

WORLD PRECISION INSTRUMENTS

USA: 175 Sarasota Center Boulevard, Sarasota FL 34240-9258 USA

Tel: (941) 371-1003 • Fax: (941) 377-5428 • E-mail: wpi@wpiinc.com • Internet: www.wpiinc.com

UK: 1 Hunting Gate, Hitchin, Hertfordshire SG4 0TJ England • Tel: 44 (0)1462 424700 • E-mail: wpiuk@wpi-europe.com

Germany: Pfingstweide 16, D-61169 Friedberg (Hessen) • Tel: +49 (0)6031 67708-0 • Fax: +49 (0)6031 67708-80 • E-mail: wpide@wpi-europe.com

China & Hong Kong: Rm 27A, No 8 Dongfang Rd., Pudong New District, Shanghai PRC • +86 6888 5517 • 400 688 5517 • ChinaSales@china.wpiinc.com

Brazil: Conselheiro Nabias, 756 sala 2611, Santos-São Paulo 11045-002 Brazil • E-mail: info@brazil.wpiinc.com

Visit us at
www.wpiinc.com
today.





WORLD
PRECISION
INSTRUMENTS

*Research products for
wherever science takes you*

WHAT'S NEW AT WPI

PREMIUM STEREOTAXIC FRAMES

WPI has a premium line of stereotaxic instruments designed for research. These frames and accessories stand up to daily laboratory use and offer the precision you demand. We are committed to bringing you the quality products you need, and the affordable solutions you want. WPI offers stereotaxic frames for animals of various sizes like mice, rats, cats, guinea pigs, hamsters, monkeys, dogs, etc. and accessories like neonatal adapters, ear bars, probe holders and tooth bars. A broad variety of stereotaxic instruments are available for various applications.

- Basic frames with single or dual arms
- Motorized and digital frames
- Parallel rail frames

Benefits

- Convenient to use and highly accurate (to 100 μ m)
- Smooth and versatile movement
- Stable and adaptable bases
- Maintain body temperature of the animals during surgery (requires optional controller)

All specifications subject to change.

WORLD PRECISION INSTRUMENTS

USA: 175 Sarasota Center Boulevard, Sarasota FL 34240-9258 USA

Tel: (941) 371-1003 • **Fax:** (941) 377-5428 • **E-mail:** wpi@wpiinc.com • **Internet:** www.wpiinc.com

UK: 1 Hunting Gate, Hitchin, Hertfordshire SG4 0TJ England • Tel: 44 (0)1462 424700 • E-mail: wpiuk@wpi-europe.com

Germany: Pfingstweide 16, D-61169 Friedberg (Hessen) • Tel: +49 (0)6031 67708-0 • Fax: +49 (0)6031 67708-80 • E-mail: wpide@wpi-europe.com

China & Hong Kong: Rm 27A, No 8 Dongfang Rd., Pudong New District, Shanghai PRC • +86 6888 5517 • 400 688 5517 • ChinaSales@china.wpiinc.com

Brazil: Conselheiro Nabias, 756 sala2611, Santos-São Paulo 11045-002 Brazil • E-mail: info@brazil.wpiinc.com

Visit us at
www.wpiinc.com
today.





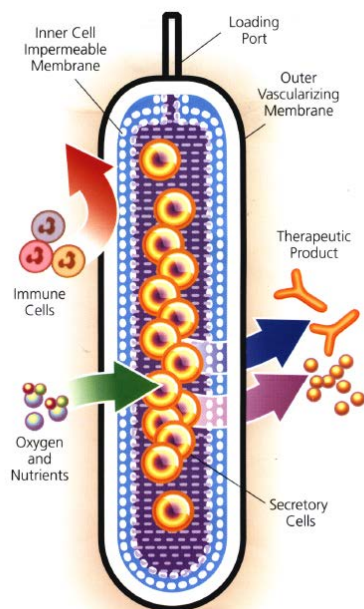
WORLD
PRECISION
INSTRUMENTS

*Research products for
wherever science takes you*

WHAT'S NEW AT WPI

ENCAPSULATED CELL DELIVERY DEVICES

WPI's TheraCyte Encapsulated Cell Delivery Devices are a proven technology and gold standard for the development of cell-based therapeutics, with more than 80 peer-reviewed journal articles documenting its use. Now, it is possible to deliver a therapy right where you need it, in natural or genetically engineered cells. The unique TheraCyte design provides immunoisolation by surrounding the cells with a protective, biocompatible shield. The device membrane promotes host vascularization, which supplies nourishment for cell survival and ensures rapid absorption (uptake) of therapeutic molecules. Encapsulation also offers significant safety benefits by ensuring the containment of transplanted cells.



Benefits

- Islets reside inside an immunoprotective barrier, which enables use of stem cell-derived or cadaveric human islets without immunosuppression
- Blood vessels integrate into the outer edge of a capsule for rapid insulin release and natural glucose control
- Highly efficient use of islets
- Minor surgical procedure to implant
- Capsules can be readily replaced, if necessary
- Treatment for Type 1 diabetics – including kids - and eventually Type 2

All specifications subject to change.

WORLD PRECISION INSTRUMENTS

USA: 175 Sarasota Center Boulevard, Sarasota FL 34240-9258 USA

Tel: (941) 371-1003 • **Fax:** (941) 377-5428 • **E-mail:** wpi@wpiinc.com • **Internet:** www.wpiinc.com

UK: 1 Hunting Gate, Hitchin, Hertfordshire SG4 0TJ England • Tel: 44 (0)1462 424700 • E-mail: wpiuk@wpi-europe.com

Germany: Pfingstweide 16, D-61169 Friedberg (Hessen) • Tel: +49 (0)6031 67708-0 • Fax: +49 (0)6031 67708-80 • E-mail: wpide@wpi-europe.com

China & Hong Kong: Rm 27A, No 8 Dongfang Rd., Pudong New District, Shanghai PRC • +86 6888 5517 • 400 688 5517 • ChinaSales@china.wpiinc.com

Brazil: Conselheiro Nabias, 756 sala 2611, Santos-São Paulo 11045-002 Brazil • E-mail: info@brazil.wpiinc.com

Visit us at
www.wpiinc.com
today.

